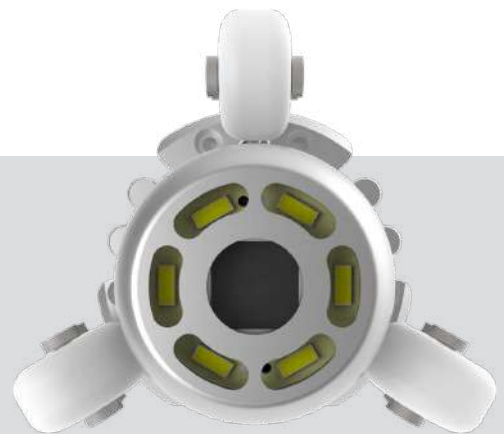


LEDRig Plus

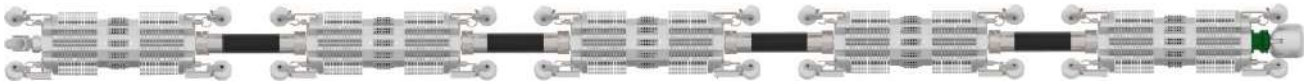
UV LED CURING TECHNOLOGY

LEDRig Plus is a UV LED chain designed to cure glass-fibre reinforced CIPP liners in the field of mainlines sewer renovation. It features eight heads of 300 W each, offering a total power of 2.400 W compatible with renovation applications in diameters ranging from DN100 to DN600, and with an option for up to DN1200.



LED Rig Plus

UV LED CURING TECHNOLOGY



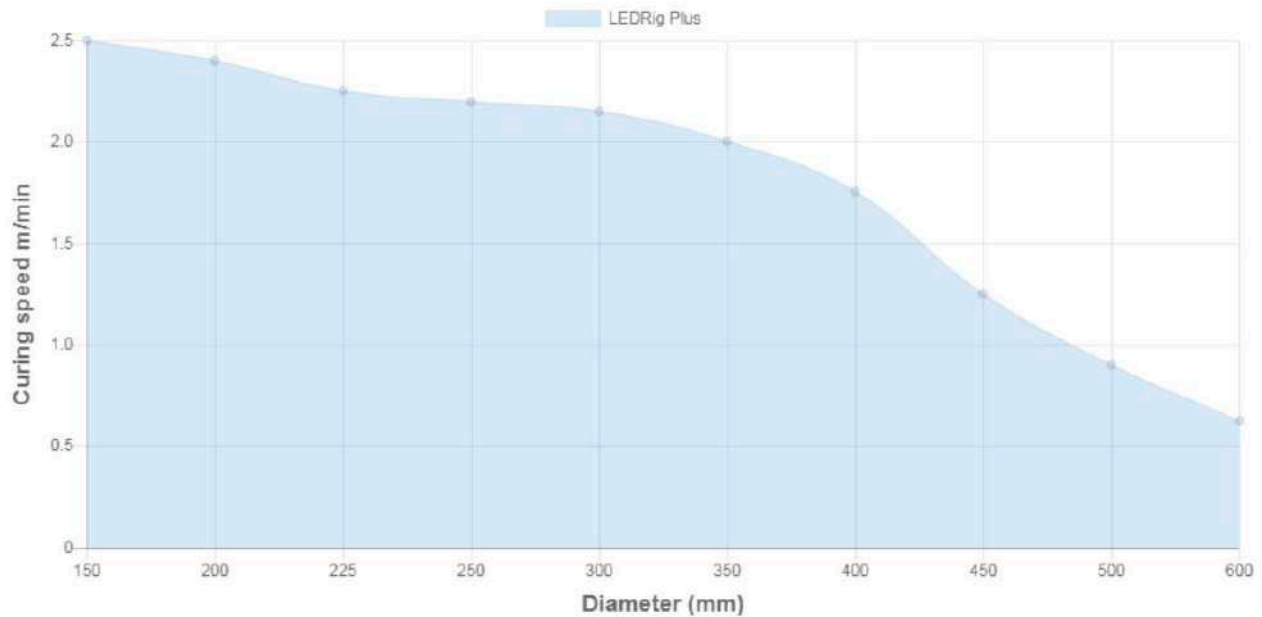
LED Rig Plus is a UV LED chain designed to cure glass-fibre reinforced CIPP liners in the field of mainlines sewer renovation. It features eight heads of 300 W each, offering a total power of 2.400 W compatible with renovation applications in diameters ranging from DN100 to DN600, and with an option for up to DN1200. Its smart heat dissipating design avoids the need for continuously cooling the head internally, relying on a highly thermally conductive construction.

LED Rig Plus curing speed varies according to the pipe diameter and thickness. For example, a DN400/4 liner would be cured with speeds up to 1,7 m/min and generally more than double the speed of traditional UV lamp-based chains.

The entire process is monitored by a control unit placed on the cable reel with 200 m of cable, with the option of mounting up to 1.000 m of umbilical cable. This unit is equipped with a first-class PLC to configure and monitor the entire curing process. A set of 4 temperature sensors, 3 infrared and one thermocouple, provides all necessary information to ensure quality of the finished liner.



LED Rig Plus Curing Speeds

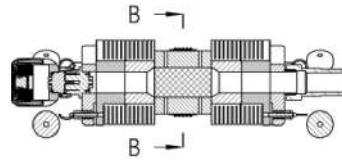
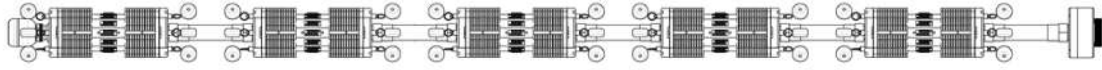


LED Rig Plus Curing Speeds

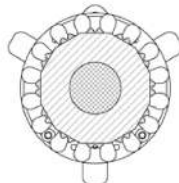
LED Rig Plus System Specifications

Specifications

Working diameters	DN150 – DN600 (ready for DN1.200)
System control	Siemens PLC, proprietary software
UV LED lamps	Switchable, 0-300 W
Number of lamps	8
Sensing	4 temperature sensors, 3 IR contactless and one thermocouple
Cable reel	Motorized, automated
Umbilical cable	200 m (DN14) up to 1.000 m (DN20)
System weight	400 kg
Dimensions	2.15x0.71x1.2 m and 1.5x1.2x1.2 m with arms folded Light train: 3,5 m
Materials	stainless steel 318, aluminium & carbon steel.
Power supply	3-phase 380 VAC. Max. power: 10 kVA



(1:1)



B-B (1:1)



(1:1)

